



T0650H-8E 6A TRIAC

Rev.A.1.0

DESCRIPTION:

650H-8E 6A TRIAC

6A TRIAC

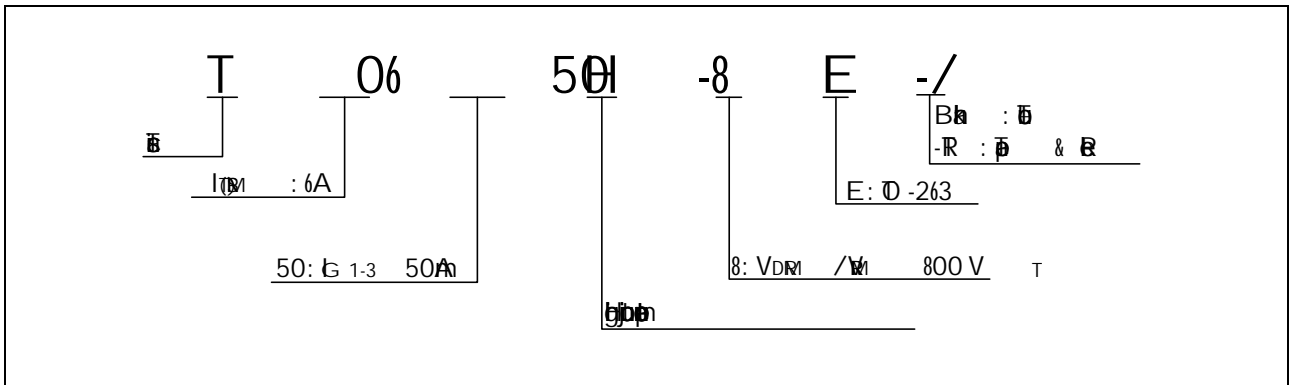
52081 (05) 5260, (2) 2 > BDC 5(1) 5(1) 5 /P < < /VD 4 5(1) 5 D 3.72A 322 (1) 2 (

$I_{G1}$ ( $T_j=25^\circ\text{C}$ ; $V_D=12\text{V}$ ; $R_L=33\Omega$ ; $I_G=8\text{mA}$ )	$V_p$	4	V
---	-------	---	---

ELECTRICAL CHARACTERISTICS (at  $T_j=25^\circ\text{C}$ )

Symbol	Test Condition	Quadrant	Value	Unit
$I_G$	$V_D=12\text{V}$ ; $R_L=33\Omega$	- -	50	mA
$V_G$		- -	1	V
$V_G$	$V_D=V_{DM}$ ; $T_j=150^\circ\text{C}$ $R_L=3.3\text{K}$	- -	0.2	V
$I_L$	$I_G=1.2\text{mA}$	-	70	mA
			100	
$I_H$	$I_T=100\text{mA}$		50	mA

ORDERING INFORMATION



MARKING

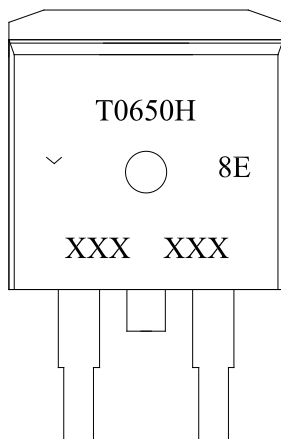


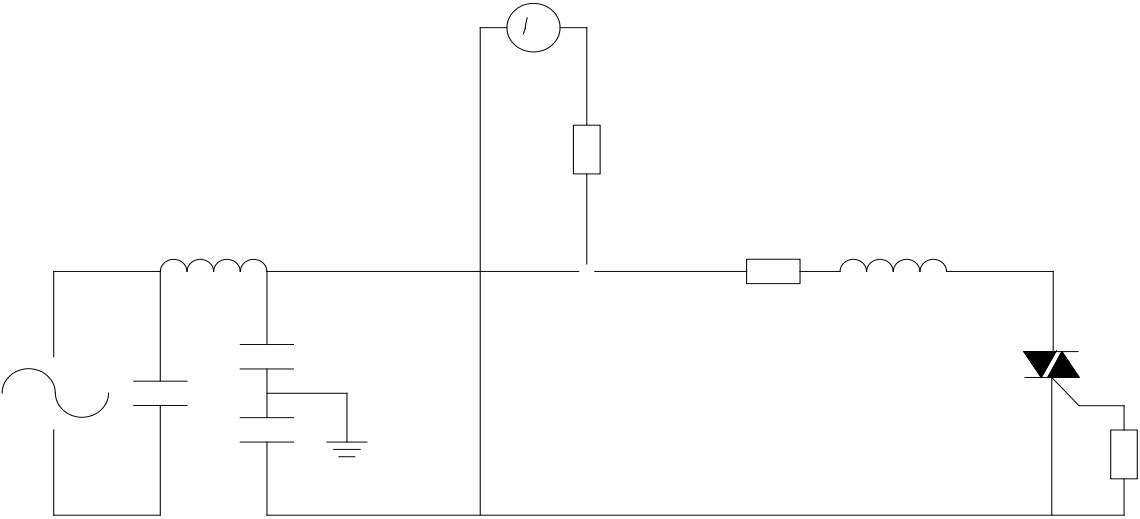


FIG.7: Pin 1

1

(

g







DELIVERY MODE



