

- , ( - , ( 0 , & 5 2 ( / ( & 7 5 2 1 , & 6 & 2 / 7

---

- 6 7 = % : \$ 7 5 , \$ &

5 H Y \$

-67 = %:

-LH-LH 0LFURHOHFWURQL

\$YHUDJH JDWH SRZHU GLVVLSDWLRQ 7		
3HDN JDWH SRZHU	3*0	:
3HDN SXOVH YROWDJH 7M QRQ UHSHWLWLYH RII VWDWH ), *	9SS	

> dZ/ > , Z d Z^d/XQOHVV RWKHUZLVH VSHFLILHG

6\PERO	7HVW &RQGLWLRQ	4XDGUDQW	9DOXH
,7		0\$;	P\$
9*7	9 9 5	0\$;	9
9*	9 9.50 7M 5/ N	0,1	9
/	, * ;7	0\$;	P\$
,+	,7 P\$	0\$;	P\$
G9 GW	99 *DWH 2SHQ 7	0,1	9 V
G, GW	F G9 GW F 9 V	7 0,1	\$ PV
WQ	, P\$ \$, P\$ 5, P\$	7 < 3	V
W11	7M		

^d d/ , Z d Z/^d/ ^

6\PERO	3DUDPHWHU	9DOXH 0\$;	8QLW
970	70 \$, W V	7	
972	7KUHVKROG YROWDJH	7	9
5'	'\QDPLF UHVLVWDQFH	7	P
,50		7M	\$
.550	9 9.50 95 9550	7M	

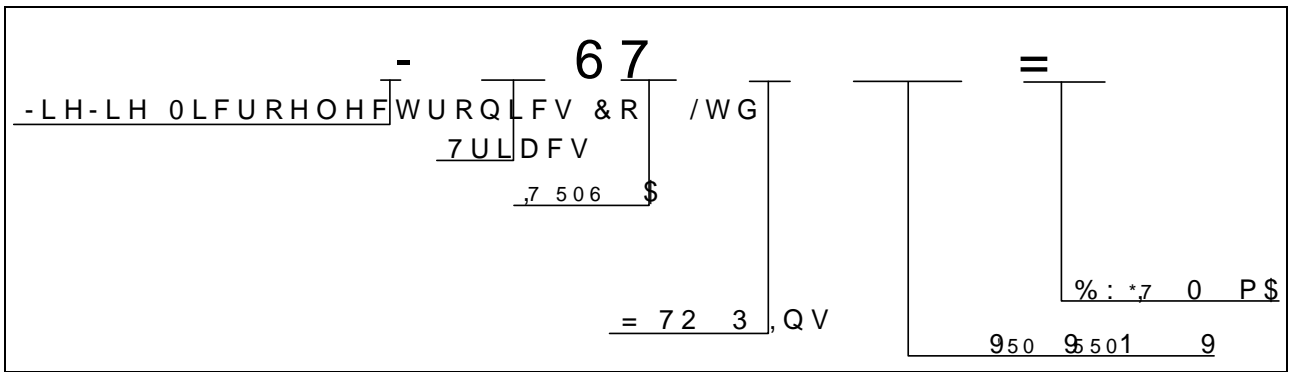
d, ZD > Z ^/^d E ^

6\PERO	3DUDPHWHU	9DOXH	8QLW
5WK M	F MXQFWLRQ WR FDVH \$&		:
5WK M	D MXQFWLRQ WR DPELHQW \$&		:

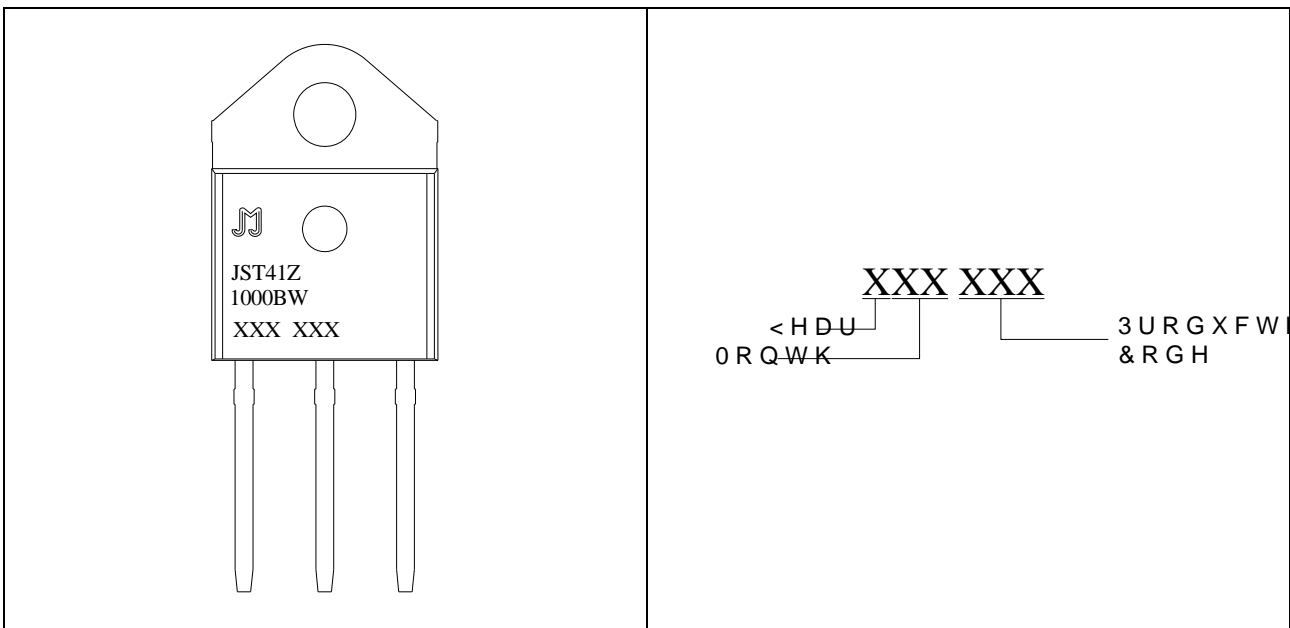
-67 = %:

-LH-LH 0LFURHOHFWURQL

KZ Z/E' /E&KZD d/KE



D Z</E'



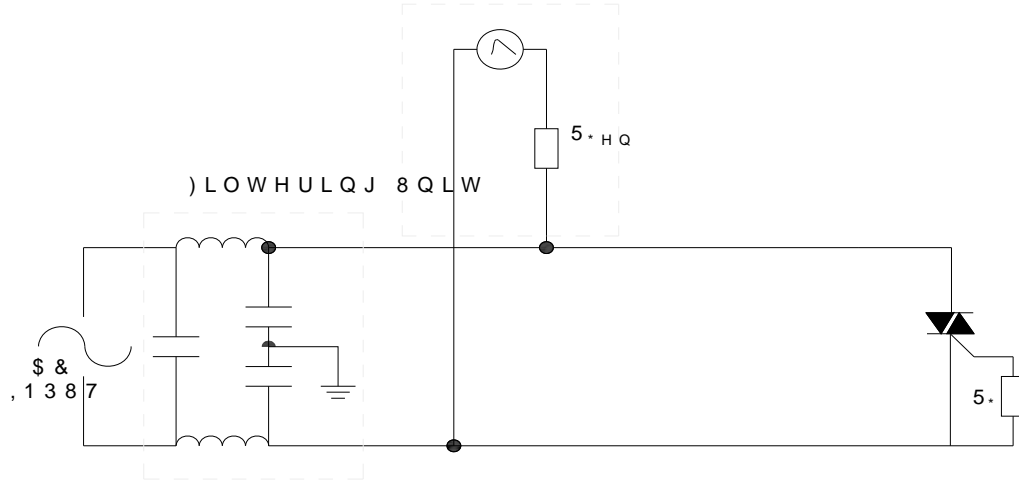


-67 = %:

-LH-LH 0LFURHOHFWURQL

), \* Ö7HVW FLUFXLW IRU LQGXFWLYH DQG UMVQGDUGV OF

, (& 6WDQGDUGV  
6XUJH \*HQHUDWRU  
6YROWDJH VXUJH  
6FXUUHQW VXUJH



-67 = %:

-LH-LH 0LFURHOHFWURQL

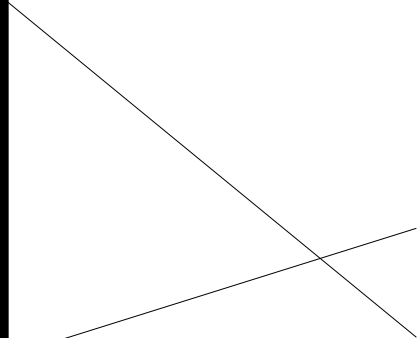
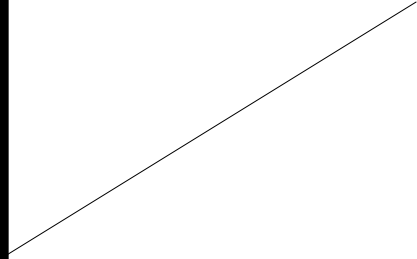
KZ Z/E' /E&KZD d/KE

2UGHU FR	9ROWD 9'50 950 9	,*7 P\$	3DFNDJH	%DVH T SFV	'HOLYHU\ PRGH
-67 = %:			72 3 ,QV		7XEH

'RFXPHQW 5HYLVLRQ +LVWRU\

'DWH	5HYLVLRQ	&KDQJHV
0D\	\$	/DVW XSGDWHG
2FW	\$	5HYLVLRQ.\$*( 0(&+\$1,&\$/ '\$7\$

0  
1  
2  
3  
4  
5  
6  
7  
8  
9



- 67 = % :

- LH-LH 0LFURHOHFWURQL

---

,QIRUPDWLRQ IXUQXPHQW ILQ WKOLHGRHG WR EH DFFXUDWH D  
-LDQJVVX -LH-LH 0LRRHOWHG WDVROLFHV OLWUHRUSRQVLEERQVHT  
RI XVH ZLWKRXW FRQVLGHUDWLRQ IRG MWFKQLQURFUDWLRQ  
LQ WKLW GRFXPHQW DQJXZLWHFRXWRQRWLFH DSDUW IURP V  
VLJQHG MHF ZX €`PPĐ p€ €Á(E Bu OLDW ZKHQ DQP WRQ I( G

XRQ I( G LW R OLW PD D]L p€ „E