

JIEJIE MICROELECTRONICS CO., LTD.

---

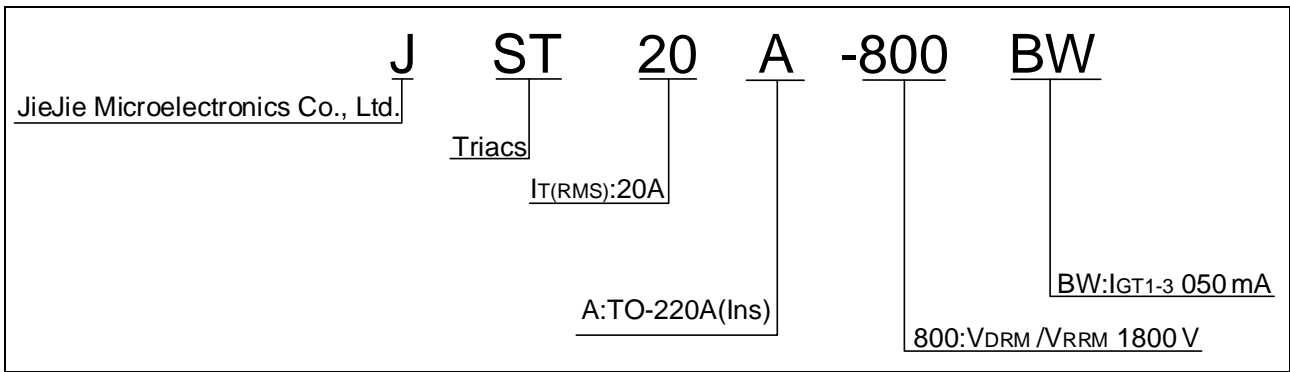
Average gate power (6 (er))13 dissipation ( )

$P_{G(AV)}$

0.5

W

ORDERING INFORMATION



MARKING

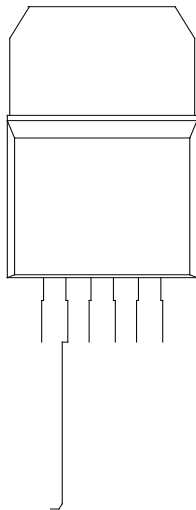


FIG.1: Maximum power dissipation versus RMS on-state current

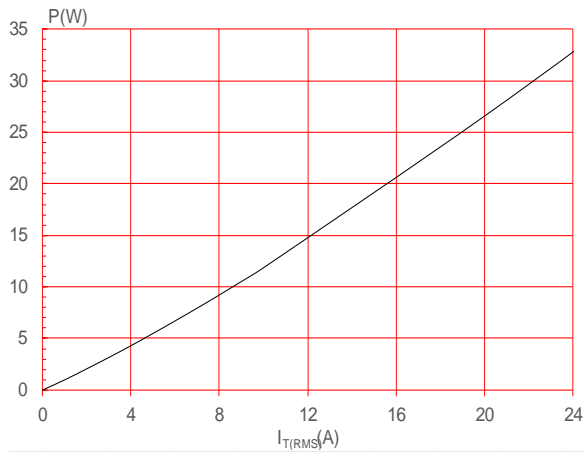


FIG.2: RMS on-state current versus case temperature

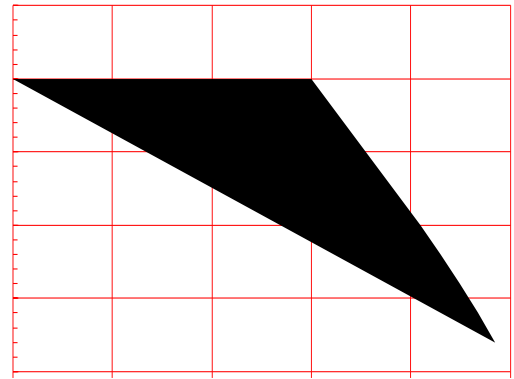
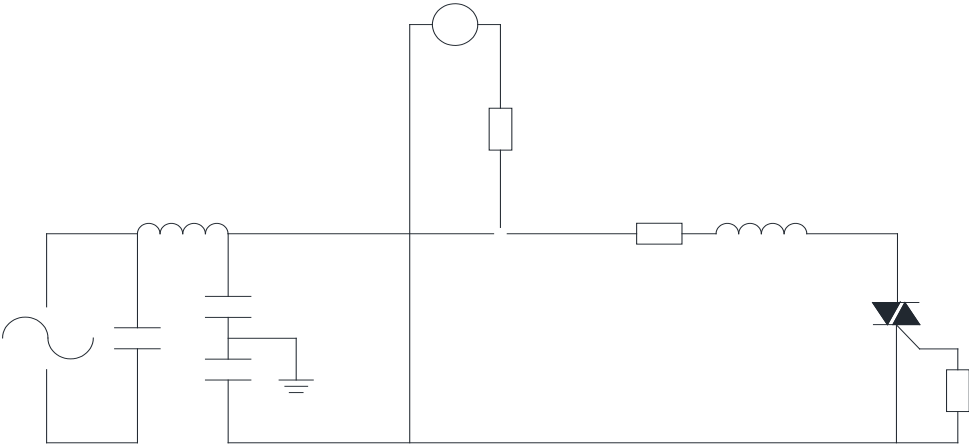


FIG.7 ÖTest circuit for inductive and resistive loads to IEC-61000-4-5 standards



## ORDERING INFORMATION

Order code	Voltage $V_{DRM}/V_{RRM}$ (V)	IGT(mA)	Package	Base qty. (pcs)	Delivery mode
		H- I- J			
JST20A-800BW	800	50	TO-220A(Ins)	50	Tube

## Document Revision History

Date	Revision	Changes
Apr.12, 2023	A.1.0	Last updated
Oct.13, 2025	A.1.1	Revise PACKAGE MECHANICAL DATA



Information and... [ont28. o,IsaI 11. TDm [().4,( )22 (C1 Tc -0 0 2 Tc 0.671e a i)64 n(o)10e4 un1