

for general purpose AC
FF function in applications
motor starting circuits, for
ers, motor speed controllers.
especially recommended for
external plastic package,
ulation voltage of 2000
File ref: E252906).

	Symbol	Value	Unit
	T_{stg}	-40-150	
	T_j	-40-125	
25)	V_{DRM}	1200	V
25)	V_{RRM}	1200	V

Peak gate power	P_{GM}	10	W
Peak pulse voltage ($T_j=25$; non-repetitive,off-state;FIG.7)	V_{pp}	4	kV

($T_j=25$ unless otherwise specified)

Symbol	Test Condition	Quadrant	Value		Unit
I_{GT}	$V_D=12V R_L=33$	- -	MAX.	35	mA
V_{GT}		- -	MAX.	1	V
V_{GD}	$V_D=V_{DRM} T_j=125$ $R_L=3.3k$	- -	MIN.	0.2	V
I_L	$I_G=1.2I_{GT}$	-	MAX.	50	mA
				60	
I_H	$I_T=500mA$		MAX.	40	mA
dV/dt	$V_D=800V$ Gate Open $T_j=125$		MIN.	400	V/ μs
(dI/dt)c	(dV/dt)c=20V/ μs $T_j=125$		MIN.	10	A/ms
t_{on}	$I_G=40mA I_A=200mA I_R=20mA$ $T_j=25$		TYP.	7	μs
t_{off}				50	

Symbol	Parameter		Value(MAX.)	Unit
V_{TM}	$I_{TM}=22.5A t_p=380\mu s$	$T_j=25$	1.5	V
V_{TO}	Threshold voltage	$T_j=125$	0.77	V
R_D	Dynamic resistance	$T_j=125$	32	m
I_{DRM} I_{RRM}	$V_D=V_{DRM} V_R=V_{RRM}$	$T_j=25$	10	μA

J ST 16 F -1200 CW
JieJie Microelectronics Co., Ltd.

FIG.1: Maximum power dissipation versus RMS on-state current

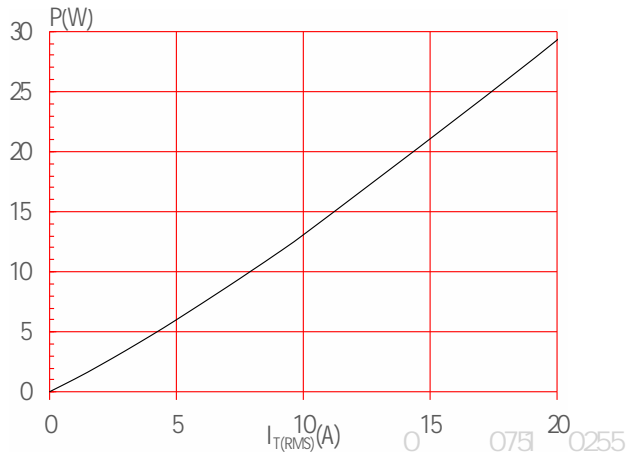


FIG.2: RMS on-state current versus case temperature

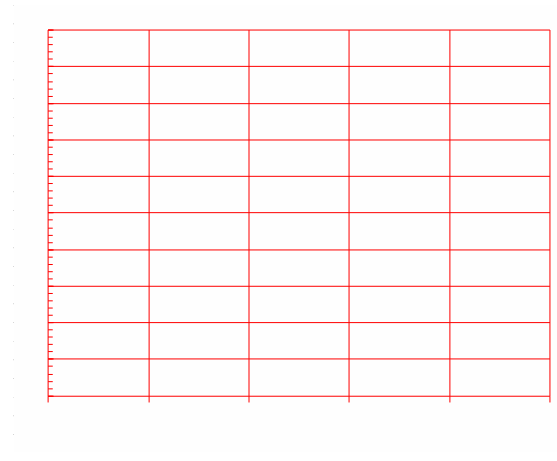
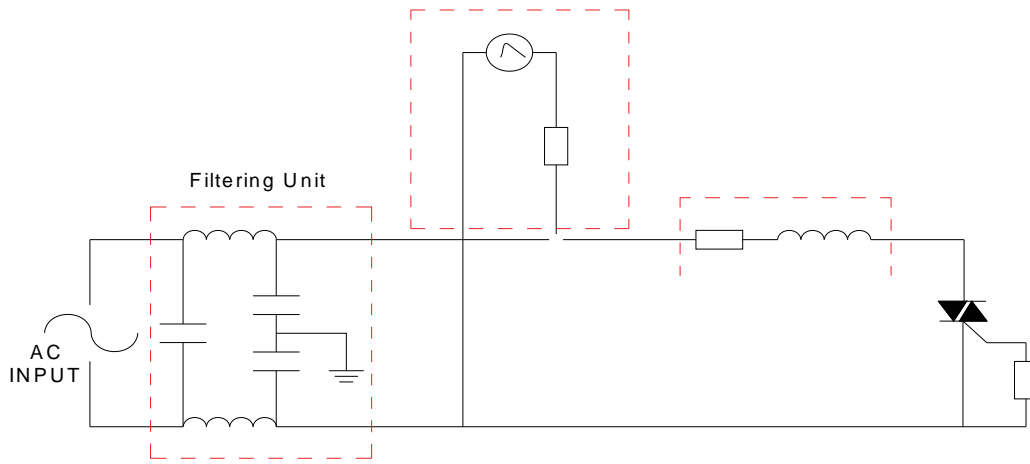


FIG.7 Test circuit for inductive and resistive loads to IEC-61000-4-5 standards





Information furnished in this document is believed to be accurate and reliable. However,
Jiangsu JieJie Microelectronics