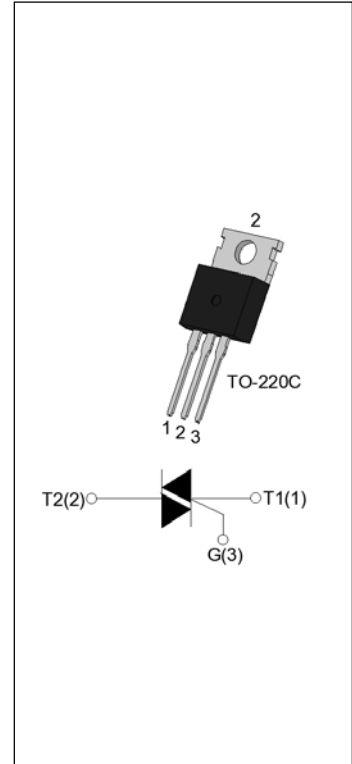


DESCRIPTION:

6 Pin Voltage Controlled Rectifier






MAIN FEATURES

Symbol	Parameter	Unit
I_M	Forward Current	A
V_{DM} / V_{RM}	Forward/Reverse Voltage	V
I_G	Gate Current	A

ABSOLUTE MAXIMUM RATINGS

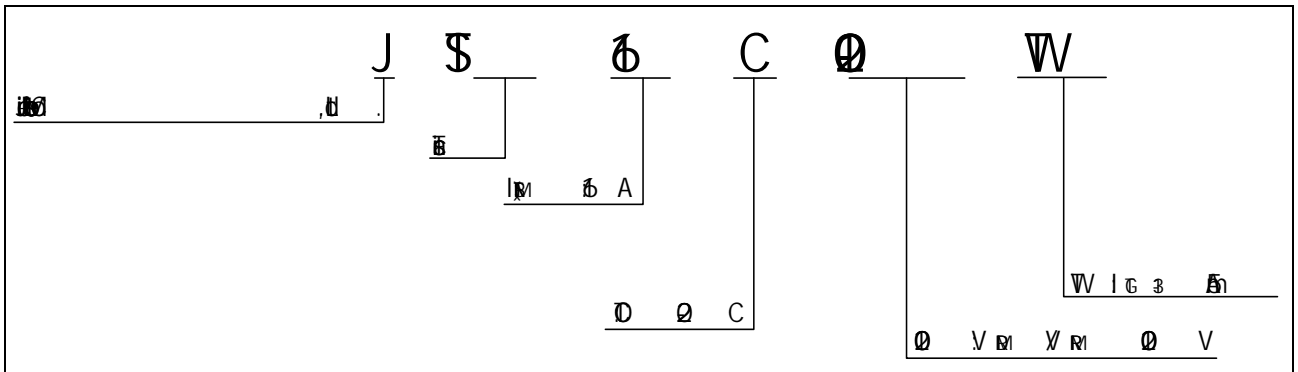
Parameter	Symbol	Value	Unit
Storage Temperature	T_{STG}	-55 to 150	°C
Junction Temperature	T_J	-55 to 150	°C
Forward Voltage	V_{DM}	0	V
Reverse Voltage	V_{RM}	0	V
Forward Current	I_M	0	A
Forward Current (pulsed)	$I_{M(p)}$	0	A
Forward Current (pulsed)	$I_{M(p)}$	0	A
Forward Current Squared Time	I^2t	0	A ² s
Gate Current (at $I_G \geq 10 \mu A$)	$I_{G(j)}$	0	A/μs
Gate Current (at $I_G \leq 10 \mu A$)	$I_{G(j)}$	4	A
Power Dissipation	$P_{D(j)}$	0	W
Power Dissipation	P_{DM}	0	W

 V_p	 3	 K
--	--	--

ELECTRICAL CHARACTERISTICS

Symbol

ORDERING INFORMATION



MARKING

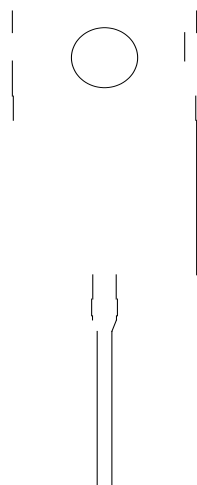


FIG.1: ~~Pin~~

0 ~~Pin~~

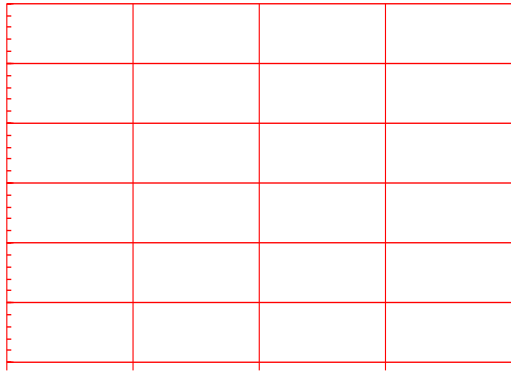
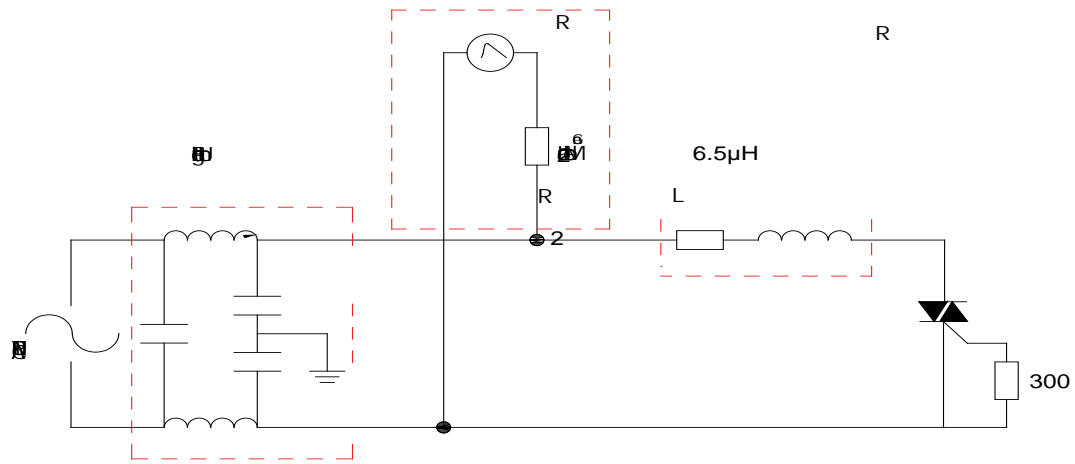


FIG.2: ~~Pin~~ 0 ~~Pin~~

~~Pin~~

8/20 Surge surge



ORDERING INFORMATION

Order code	Voltage V_{DRM}/V_{RRM} (V)	IGT(mA)	Package	Base qty. (pcs)	Delivery mode
		- -			
JST16C-1200TW	1200	5	TO-220C	50	Tube

Document Revision History

①	②	③
----------	----------	----------

