



JST16A-600BW 16A TRIAC

Rev.A.1.2

DESCRIPTION:

The JST16-600BW triac is suitable for  
 static high voltage applications  
 such as household appliances  
 has a cosine phase angle  
 JST16-600BW is a  
 16A  
 JST16-600BW is a  
 VRMS, cosine phase angle (E252906).  
 Phase angle -220 is suitable for

MAIN FEATURES

ABSOLUTE MAXIMUM RATINGS

Parameter	Symbol	Value	Unit
Storage temperature	$T_{stg}$	-40-150	°C
Operating temperature	$T_j$	-40-125	°C
Repetitive peak forward voltage (f = 25 Hz)	$V_{DRM}$	600	V
Repetitive peak reverse voltage (f = 25 Hz)	$V_{RRM}$	600	V
RMS on-state current (102 °C)	$I_T(RMS)$	16	A
Non-repetitive surge current (f = 25 Hz, t = 20ms)	$I_{TSM}$	160	A
Non-repetitive surge current (f = 25 Hz, t = 10ms)			

$P_{GM}$	k	atw	$P_{GM}$	10	W
$P_{GM}$	k	saq ( $T_j=25$ ; -rti ti yof -bt; FIG.7)	V	4	

k

**ELECTRICAL CHARACTERISTICS** ( $T_j=25$  u

Symbol	Test Condi	Qdrant	Value		Uni
$I_T$	$V_D = 12V$ $R_L = 33$	- -	MX .	50	m
$V_{GT}$		- -	MX .	1	V
$V_{GD}$	$V_D = V_{DRM}$ $T_j = 125$ $R_L = 3.3$ k	- -	MIN.	0	V

ORDERING INFORMATION

<p>J</p> <p>JiJieMi c b c b., Ltd.</p>	<p>ST 16</p> <p>Tria c s</p> <p>tr(RMS): 16</p> <p>:TO -220 ( I )</p>	<p>-600 BW</p> <p>n</p> <p>BW : t 1-3 50m</p> <p>600: <math>V_{RM}</math> / <math>V_{RM}</math> 600V</p>
--	---	--

MARKING

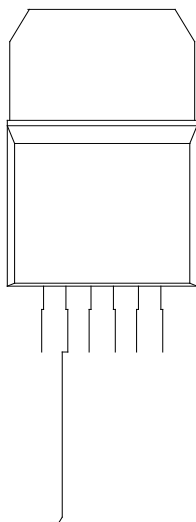


FIG.1: Maximum  
output current

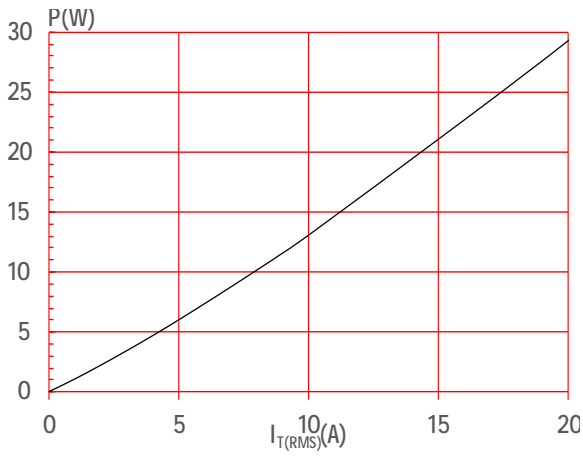


FIG.3: Signal  
katalog

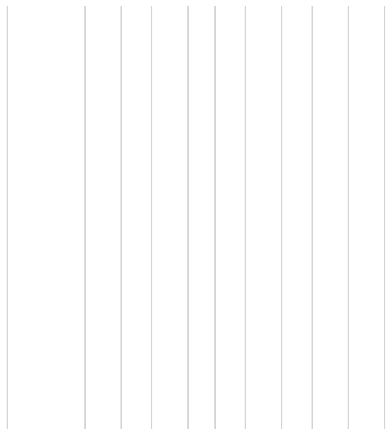


FIG.2: RMS output current  
at 100°C

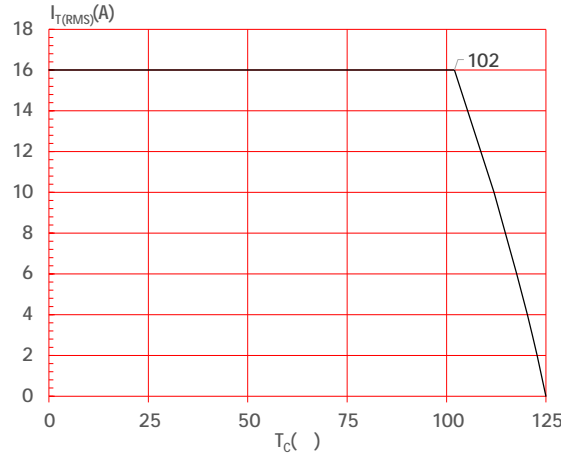
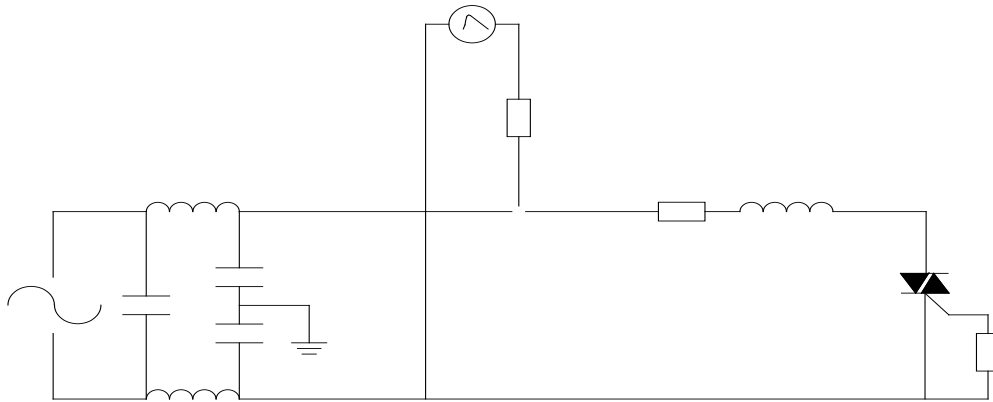
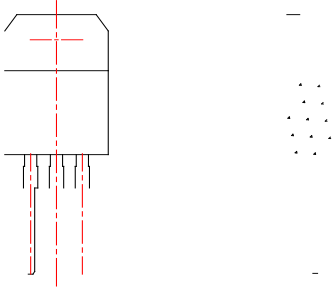



FIG.4: Output characteristic  
curve



**JST16A-600BW**

PACKAGE MECHANICAL DATA



I n  
 Jia n  
 ó s i n t o c o n  
 i n  
 \$ g n  
 P o u c s a n  
 Jia n  
 w i e y h e f o n h e s ó s c o u h c e i This o c m  
 a t i d . n  
 i s a g i t e d e r k ó Jia  
 ' 2026 Jia C n