

ELECTRICAL CHARACTERISTICS (T_j=25 unless otherwise specified)

Symbol	Test Condition	Quadrant	Value		Unit
I _{GT}	V _D =12V R _L =33	- -	MAX.	25	mA
				70	

V_{GT}

ORDERING INFORMATION

J ST 139 C -600 F

FIG.1: Maximum power dissipation versus RMS on-state current

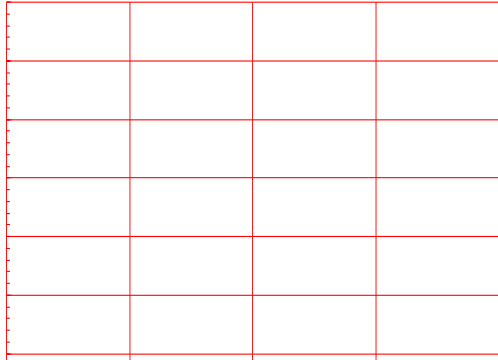
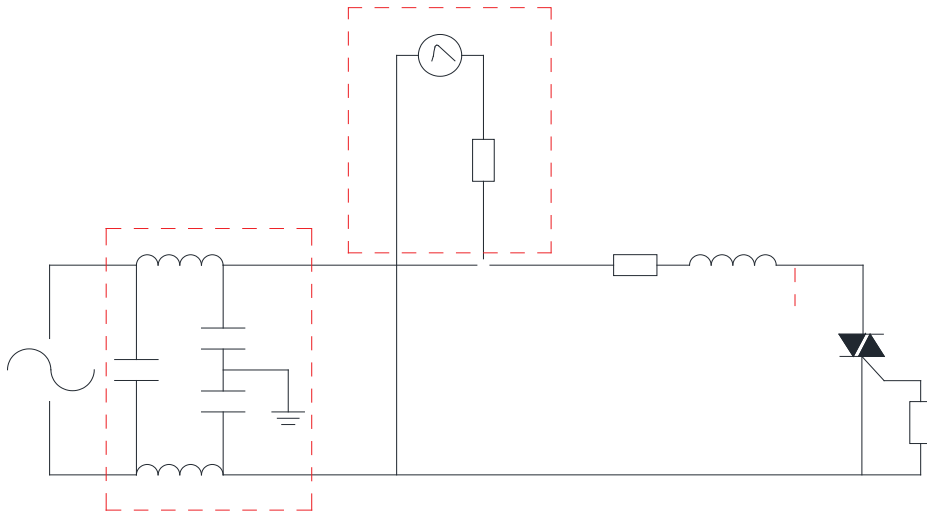


FIG.2: RMS on-state current versus case temperature

FIG.7 Test circuit for inductive and resistive loads to IEC-61000-4-5 standards



ORDERING INFORMATION

Order code	Voltage V_{DRM}/V_{RRM} (V)	IGT(mA)		Package	Base qty. (pcs)	Delivery mode
		-	-			
JST139C-600F	600	25	70	TO-220C	50	Tube

Document Revision History

Date	
------	--

PACKAGE MECHANICAL DATA



