



JST137K-600G 8A TRIAC

Rev.A.1.1

DESCRIPTION:

The JST137K-600G triac is suitable for general purpose AC switching. It can be used as an ON/OFF function in applications such as heating regulation, induction motor starting circuits, for phase control operation in light dimmers, motor speed controllers. Package TO-252 is RoHS compliant.

MAIN FEATURES

ABSOLUTE MAXIMUM RATINGS

Parameter	Symbol	Value	Unit
Storage junction temperature range	T_{stg}	-40-150	
Operating junction temperature range	T_j	-40-125	
Repetitive peak off-state voltage ($T_j=25$)	V_{DRM}	600	V
Repetitive peak reverse voltage ($T_j=25$)	V_{RRM}	600	V

ELECTRICAL CHARACTERISTICS (T_j=25 unless otherwise specified)

Symbol	Test Condition	Quadrant	Value		Unit
I _{CT}		- -	MAX.	50	mA
				100	61.8.04 687.72 T _m (V)T _j

ORDERING INFORMATION

J ST 137 K -600 G -/
| |
JieJie Microelectronics Co., Ltd. Triacs

600:V600M Dm sc1J /TT2 1 Tf 0 Tc 0 Tw 8.7734 0 0

FIG.1: Maximum power dissipation versus RMS on-state current

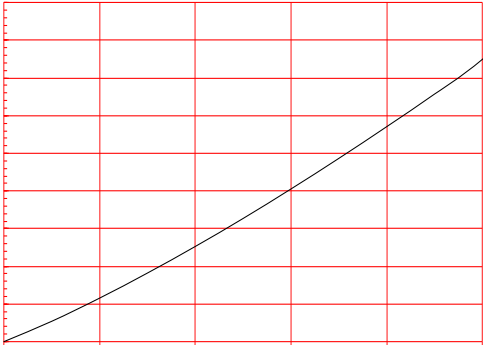


FIG.2: RMS on-state current versus case temperature

FIG.7: Relative variations of gate trigger current, holding current and latching current versus junction temperature

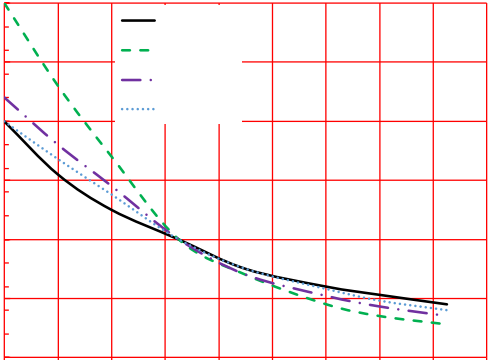
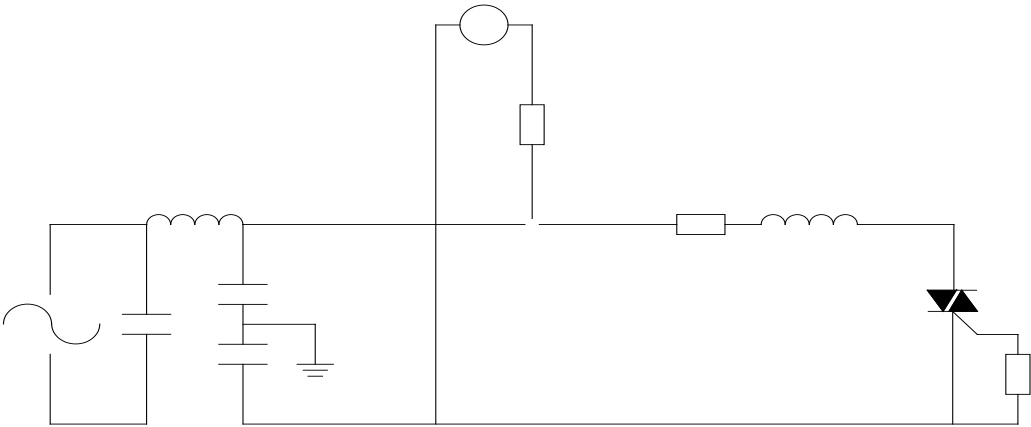


FIG.8 Test circuit for inductive and resistive loads to IEC-61000-4-5 standards



ORDERING INFORMATION

Order code	Voltage V_{DRM}/V_{RRM} (V)	IGT(mA)		Package	Base qty. (pcs)	Delivery mode
		-	-			
JST137K-600G	600	50	100	TO-252	80	Tube
JST137K-600G-TR					2,500	Tape & Reel

Document Revision History

Date	Revision	Changes
Apr.14, 2023	A.1.0	Last updated
Oct.22, 2025	A.1.1	Revise PACKAGE MECHANICAL DATA

PACKAGE MECHANICAL DATA

Ref.	Dimensions					
	Millimeters			Inches		
	Min.	Typ.	Max.	Min.	Typ.	Max.
A						
A2						
B						
C						
D						
E						

Gure <0 Td [(+)-13.7 (86)]TJ 0 Tc 0 Tw 1.507 0 T1 Tc 0 T

.7.8/He8]2-0.00426.3 (.)Tj 6.75Tw 3.950 Td (-3.438 Td

