



## JST134C-800E 4A TRIAC

Rev.A.1.1

### DESCRIPTION:

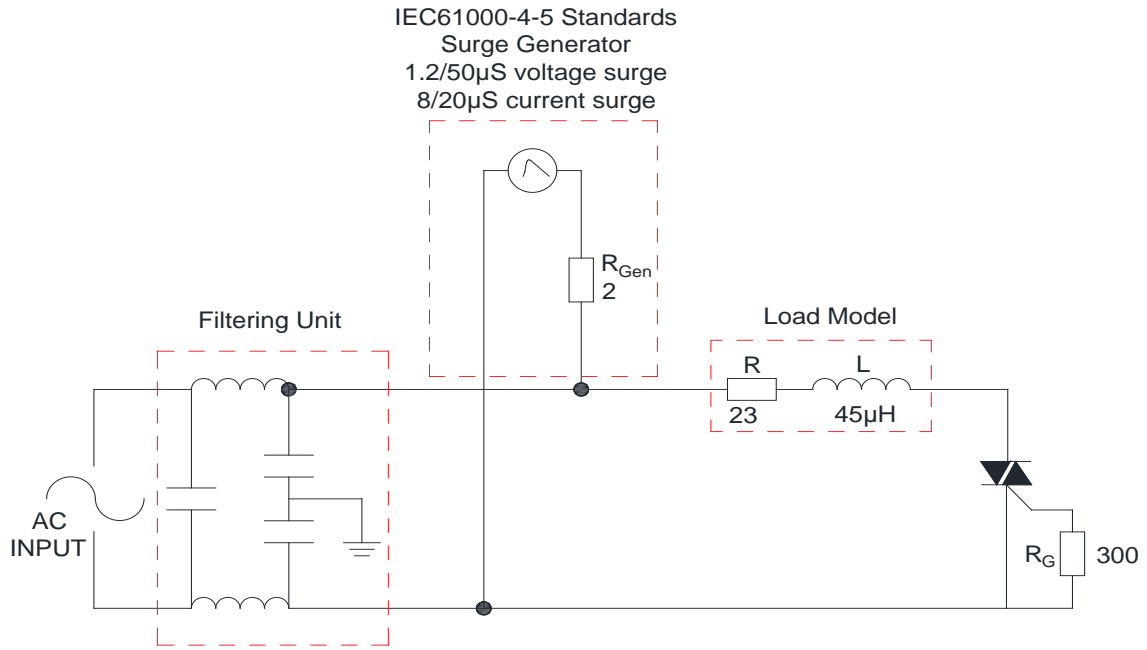
The JST134C-800E triac is suitable for general purpose AC switching. It can be used as an ON/OFF function in applications such as heating regulation, induction motor starting circuits, for phase control operation in light dimmers, motor speed controllers. From T2 terminals to 11







FIG.7 Test circuit for inductive and resistive loads to IEC-61000-4-5 standards





PACKAGE MECHANICAL DATA



**JST134C-800E**

**JieJie M**