



JST134C-800D 4A TRIAC

Rev.A.1.1

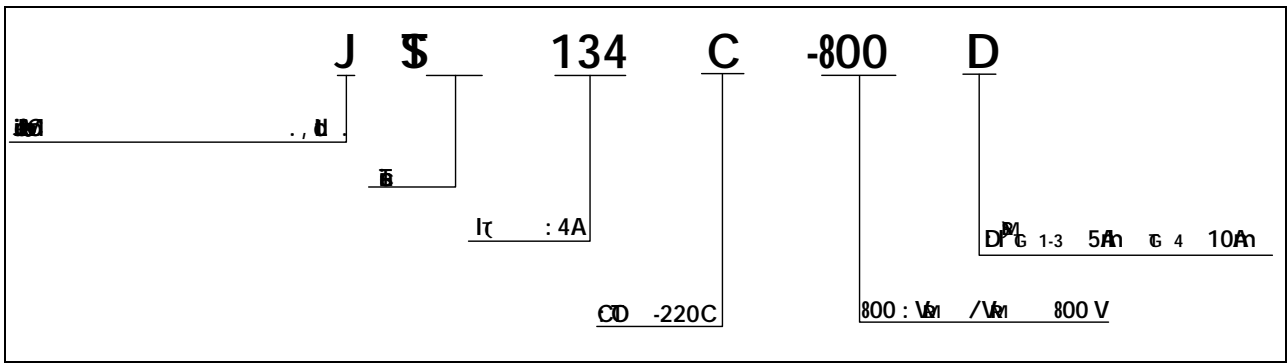
DESCRIPTION:

☒ J34C -800 D

ELECTRICAL CHARACTERISTICS

Symbol	Test Condition	Quadrant	Value	Unit
I_G	$V_D=12V$ $R_L=33$	-	5	mA
			10	
V_G		A	1	V
V_D	$V_D=V_{DM}$ $T_j=125$ $R_L=3.3k$	A	0.2	V
I_L	$I_G=1.2I_G$	-	10	mA
			20	

ORDERING INFORMATION



MARKING

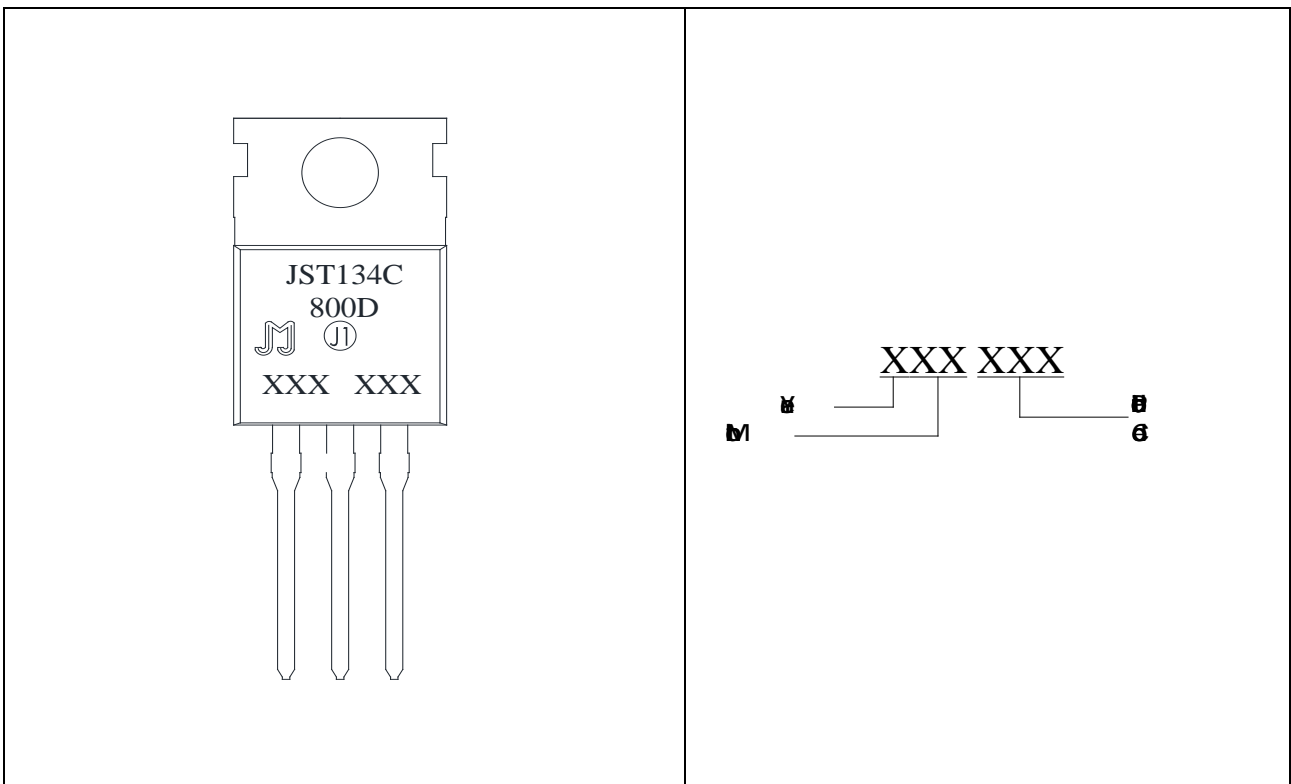




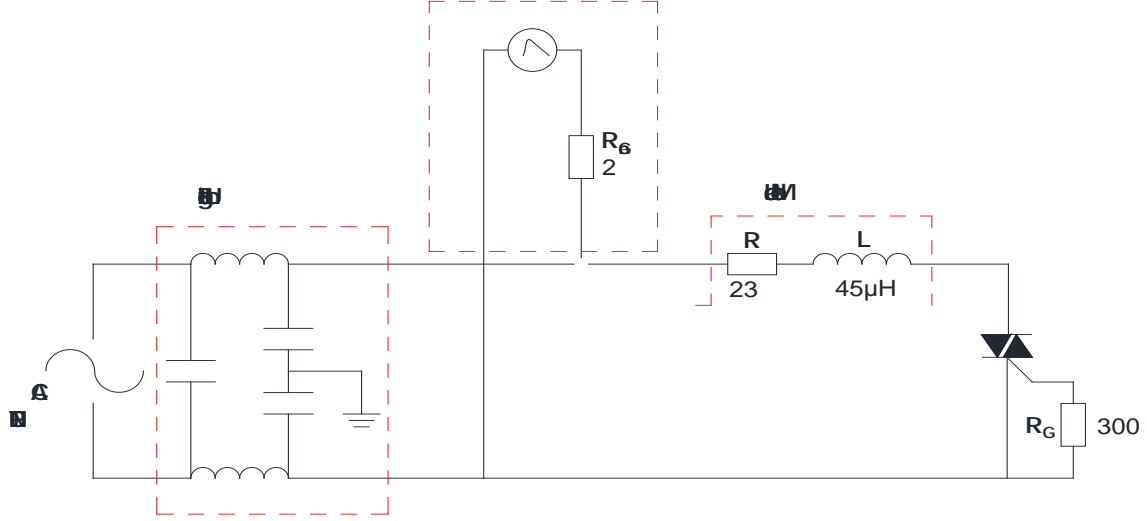
FIG.1: 


FIG.2:  - 


1000-4-5
1.2/50 μ S voltage surge
8/20 μ S current surge

R 52@87' e 2



PACKAGE MECHANICAL DATA

