

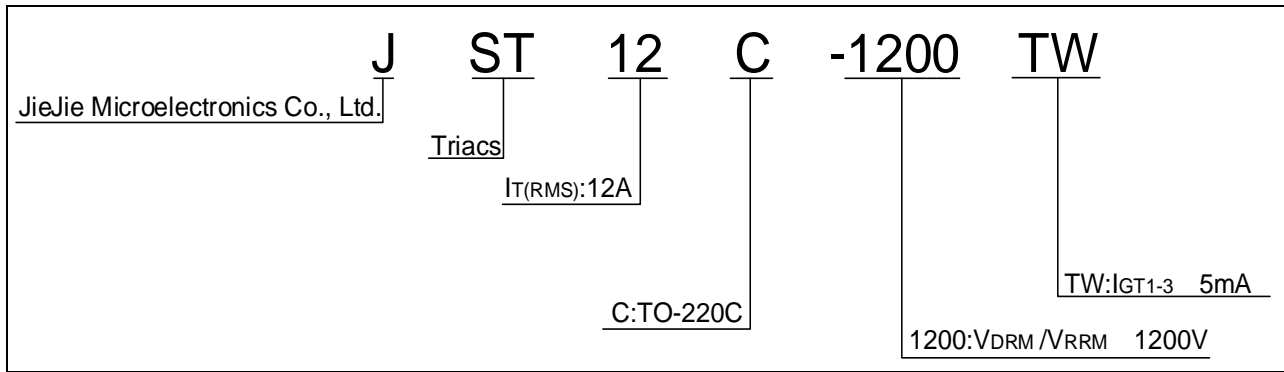


JST12C-1200TW 12A TRIAC

4 Tw 14.04 0 900 T8 0 5.04 371.04(T)3.6 (W)4 ()

JST12C-1200TW

ORDERING INFORMATION



MARKING

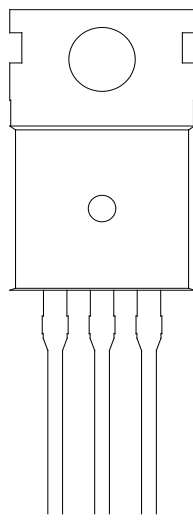


FIG.1: Maximum power dissipation versus RMS on-state current

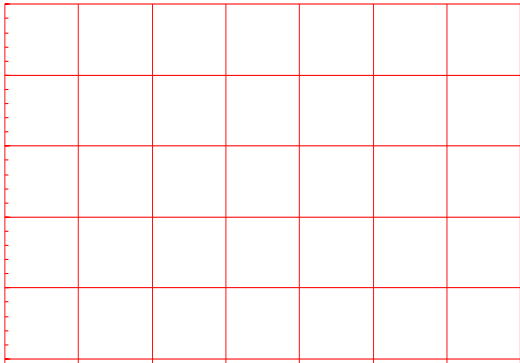
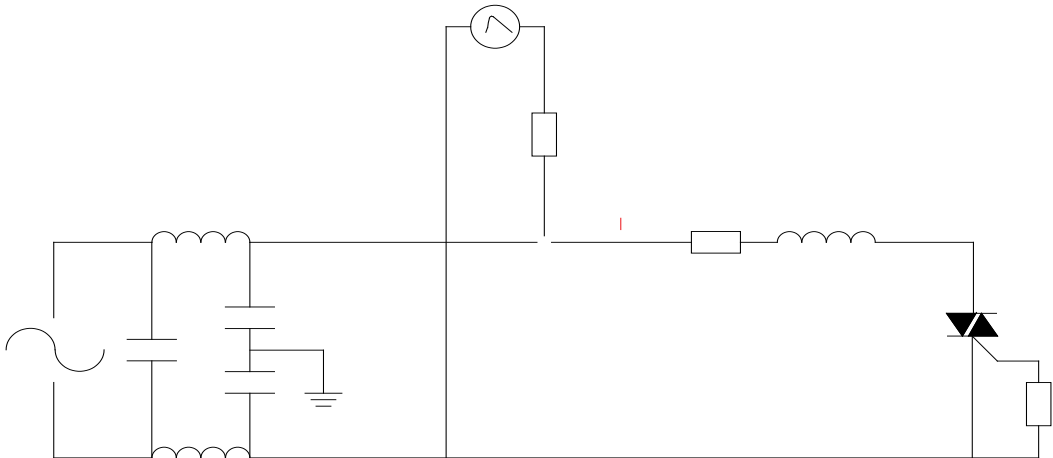


FIG.2: RMS on-state current versus case temperature

FIG.7 Test circuit for inductive and resistive loads to IEC-61000-4-5 standards



PACKAGE MECHANICAL DATA



