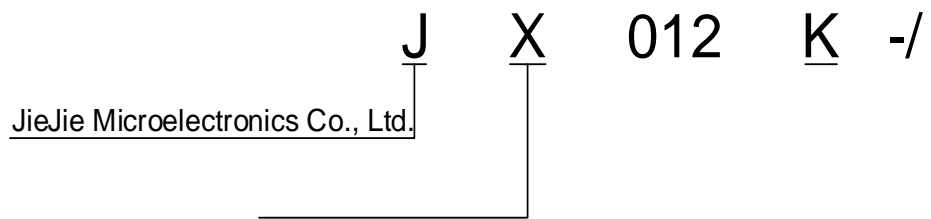




Peak gate power	$P_{GM}$	2	W
Peak pulse voltage ( $T_j=25$ )			

ORDERING INFORMATION



JX012K

Jie

FIG.7: Relative variations of gate trigger current, holding current and latching current versus junction temperature

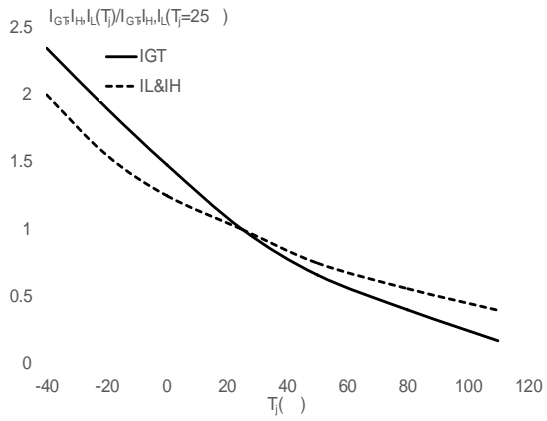
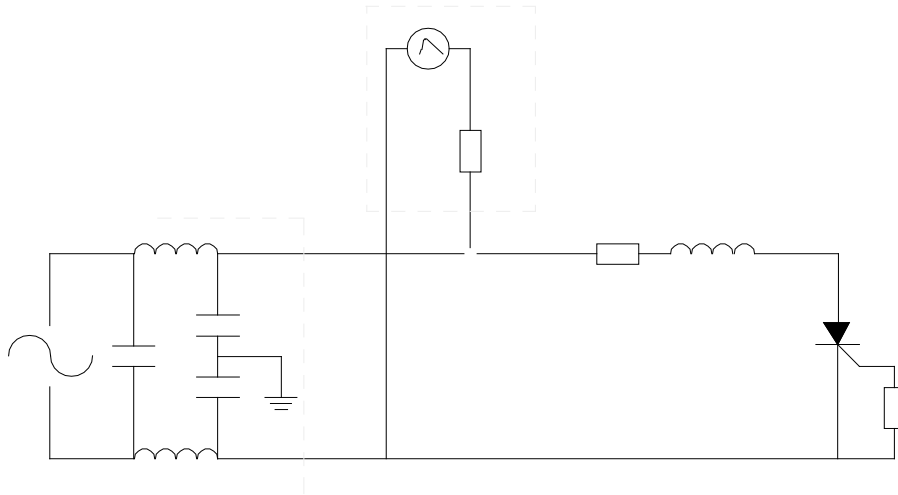


FIG.8 ÖTest circuit for inductive and resistive loads to IEC-61000-4-5 standards.



## ORDERING INFORMATION

Order code	Voltage $V_{DRM}/V_{RRM}$ (V)	IGT( $\mu$ A)	Package	Base qty. (pcs)	Delivery mode
JX012K	1200	<b>200</b>	TO-252	80	Tube
JX012K-TR				2,500	Tape & Reel

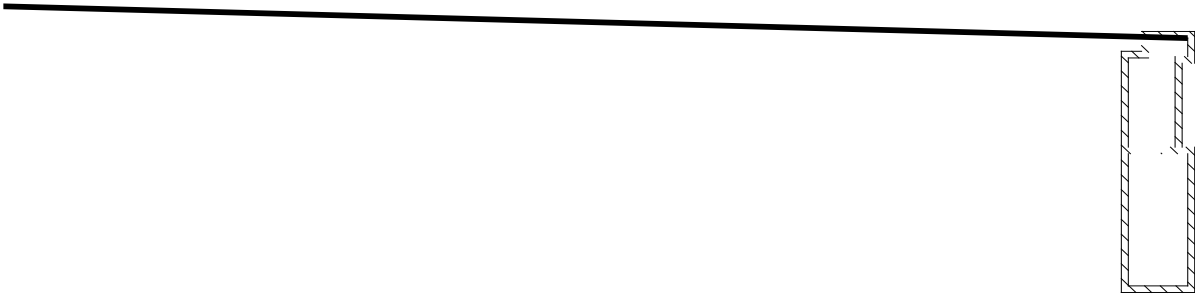
## Document Revision History

Date	Revision	Changes
Apr.12, 2023	A.1.0	Last update
Oct.22, 2025	A.1.1	Revise PACKAGE MECHANICAL DATA

JX

` Ya " fA'x '€` `bY< ` ` '@ ] Q% Q% Q% Q% Q 9 ™ v] t ] Q%d'

DELIVERY MODE



Information furnished in this document is believed to be accurate and reliable. However, Jiangsu JieJie Microelectronics Co., Ltd. assumes no responsibility for the