

>L\$\$* I''



>]Y>]Y' A]WfcY`YWhfcb]Wg'7c"z"@hX"

Peak gate power	P_{GM}	0.5	W
Peak pulse voltage ($T_j=25$; non-repetitive,off-state;FIG.7)	V_{pp}	0.5	kV

BCH9'. Operating junction temperature T_j is up to 125 when a resistor 1k is connected between Gate and Cathode. Without this resistor, the T_j is up to 110 only.

> d Z / > , Z d Z~;A dñ unless otherwise specified •

Gma Vc''	HYgh'7cbX]h]cb'	JU' iY'			I b]h' . y‡ 6†Xc Š
		A=B''	HMD''	A5L'' • 0 H'	

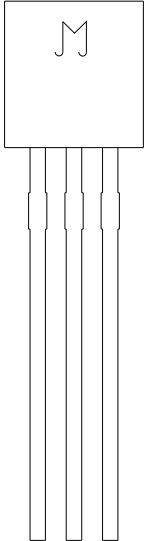
>L\$\$* I''

 >]Y>]Y' A]WfcY`YWhfcb]Wg'7c"z'@hX"

KZ Z/E' /E&KZD d/KE

	J	X	006	U	-/
<u>JieJie Microelectronics Co., Ltd.</u>		<u>Sensitive gate SCRs</u>		<u>Blank: Bulk Pack -TR: Tape & Reel</u>	
			<u>Part number</u>		<u>U:TO-92</u>

D Z </E'

	<table border="0"> <tr> <td>Year</td> <td>_____</td> <td>_____</td> <td>Production Code</td> </tr> <tr> <td>Month</td> <td>_____</td> <td>_____</td> <td>Code</td> </tr> </table>	Year	_____	_____	Production Code	Month	_____	_____	Code
Year	_____	_____	Production Code						
Month	_____	_____	Code						

·
·

·
·

TEL

>L\$\$* I ' ' .

M>]Y>]Y' A]WfcY`YWhfcb]Wg'7c"z'@hX"

:: ; "%.' Maximum power dissipation versus
RMS on-state current

:: ; "&.' RMS on-state current versus case
temperature

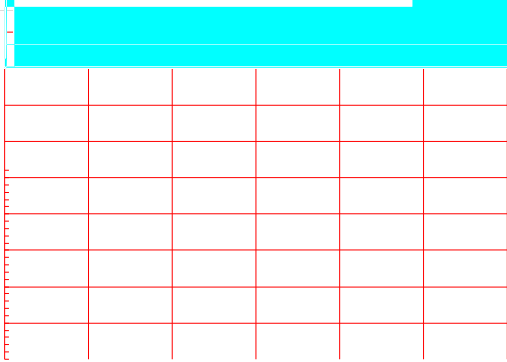
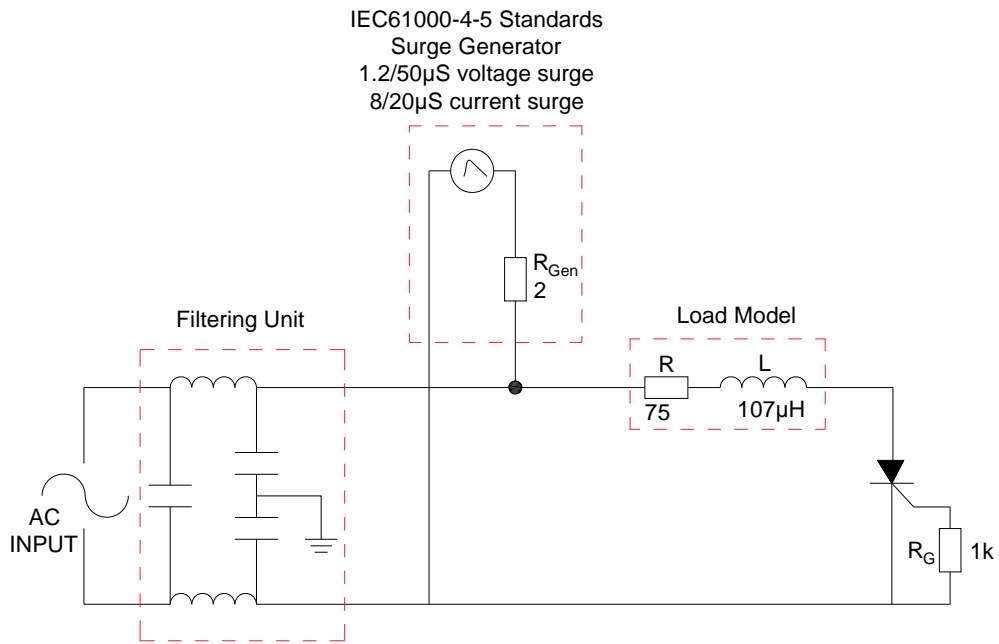


FIG.7 ÖTest circuit for inductive and resistive loads to IEC-61000-4-5 standards.



>L\$\$\$* I''

 >]Y>]Y' A]WfcY'YWhfcb]Wg'7c"z'@hX"

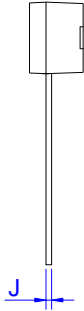
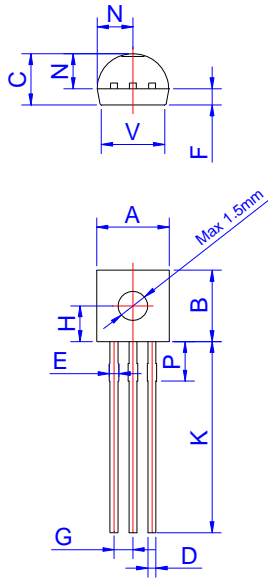
KZ Z/E' /E&KZD d/KE

CfXYf'WcXY'	Jc`hU[Y' J8FA#JFFA'flJL'	=; Hfl 5L'	DUW_U[Y'	6UgY'ehm" fidWgL'	8Y]jYfm' a cXY'
>L\$\$\$* I'	*\$\$'	®, \$'	HC! -&'	%z\$\$\$'	6 i`_DUW_'
>L\$\$\$* I!HF'				&z\$\$\$'	HUdY' /'FYY'

8cWi aYbh'FY j]g]cb'<]ghcfm'

Date	Revision	Changes
------	----------	---------

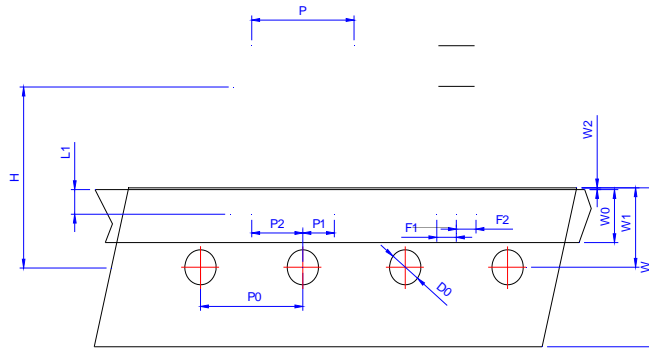
W < ' D , E/ > d



Ref.	Dimensions					
	Millimeters			Inches		
	Min.	Typ.	Max.	Min.	Typ.	Max.
A	4.45					
B	4.32					
C	3.1	U	1	f.		
D		M	N		1	
E						
F						
G						
H						
J						
K						
N						
P						
V						

>/s Zz DK

D57?5 ; 9'	C I H@=B9'	65 ; fID7GL'	=BB9F'6CL' fID7GL'	75 FHCB'6CL' fID7GL'
TO-92	Bulk Pack	1,000	10,000	50,000



Ref.	Dimensions					
	Millimeters			Inches		
	Min.	Typ.	Max.	Min.	Typ.	Max.
P	12.40	12.70	13.00	0.488	0.500	0.512
P0	12.40	12.70	13.00	0.488	0.500	0.512
P1	3.55	3.85	4.15	0.140	0.152	0.163
P2	5.95	6.35	6.75	0.233	0.250	0.265
± P	-1.00	0	1.00	-0.039	0	0.039
F1 ~ F2	2.30	2.50	2.70	0.090	0.098	0.106
F1-F2	-0.10	0	0.10	-0.004	0	0.004
W	17.50	18.00	19.00	0.689	0.709	0.748
W0	5.50	6.00	6.50	0.217	0.236	0.256
W1	8.50	9.00	9.50	0.335	0.354	0.374
W2			1.00			0.039
D0	3.80	4.00	4.20	0.150	0.157	0.165
± H	-1.00	0	1.00	-0.039	0	0.039
L1	2.50			0.098		
H	18.00	19.00	20.00	0.709	0.748	0.787
H1 ~ H2			3.00			0.119

