



JCT1275CS 75A SCR

RevA.1.1

DESCRIPTION:

With high ability to withstand the shock loading of large current, JCT1275CS SCR provides high dV/dt rate with strong resistance to electromagnetic interference. It is especially recommended for use on solid state relay, UPS, SVC, power charger, T-tools etc. Package TO-247S is RoHS compliant.

MAIN FEATURES

Symbol	Value	Unit
$I_{T(RMS)}$	75	A
V_{DRM}/V_{RRM}	1200	V
I_{GT}	10-80	mA

ABSOLUTE MAXIMUM RATINGS

Parameter	Symbol	Value	Unit
Storage junction temperature range	T_{stg}	-40-150	
Operating junction temperature range	T_j	-40-125	
Repetitive peak off-state voltage ($T_j=25^\circ C$)	V_{DRM}	1200	V
Repetitive peak reverse voltage ($T_j=25^\circ C$)	V_{RRM}	1200	V



Average gate power dissipation ($T_j=125$)	$P_{G(AV)}$	1	W
Peak gate power	P_{GM}	22	W
Peak pulse voltage ($T_j=25$; non-repetitive,off-state;FIG.7)	V_{pp}		

JCT1275CS

 **Jè Jè Mì c è c b s Co , Ltd.**

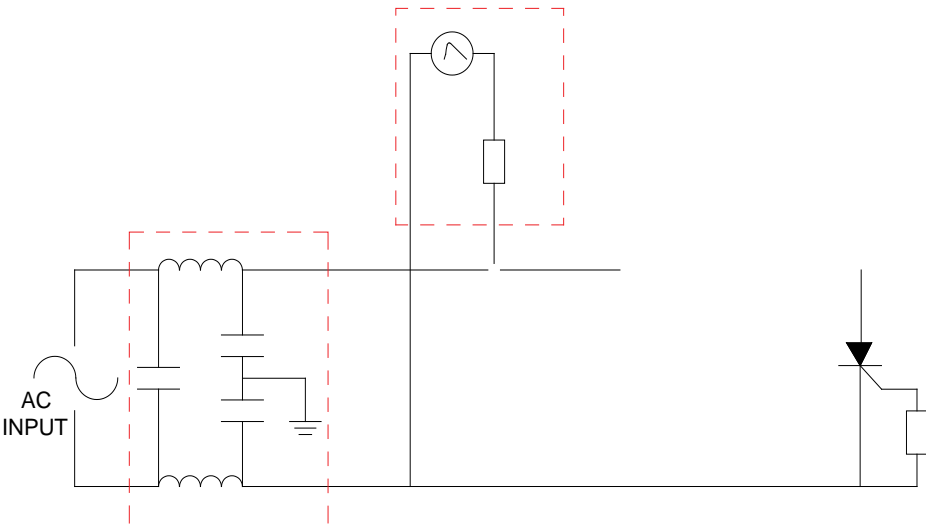
ORDERING INFORMATION

FIG.1: Maximum power dissipation versus RMS on-state current



FIG.2: RMS on-state current versus case temperature

FIG.7 Test circuit for inductive and resistive loads to IEC-61000-4-5 standards.





ORDERING INFORMATION

Order code	V _{ge} V _{DRM} /V _{RRM} (V)	IGT(A)	Package	Ball (p)	Delivery code
JCT1275CS	1200	10-80	TO-247S	30	Tb

Document History

Date	Revision	Changes
Apr.13, 2023	A.1.0	Last update
Oct.16, 2025	A.1.1	Revise PACKAGE MECHANICAL DATA

JCT1275CS

 Jè Jè Mè è è c b s Co., Ltd.

PACKAGE MECHANICAL DATA

