



## JOC SZ21X-M4, JOC SZ31X-M4 Series

Rev.A.1.0

### DESCRIPTION:

The products are 4-pin thyristor opto-couplers. The device combines an AlGaAs infrared emitting diode as the emitter which is optically coupled to a monolithic silicon zero-crossing photo triac in a plastic SOP4 package. The products are widely used in solenoid/valve controls, lighting controls, motor controls, temperature controls, static AC power switches, solid state relays, interfacing microprocessors up to 265 V<sub>AC</sub> peripherals.

### MAIN FEATURES

High isolation 3750 VRMS

DC input with zero-crossing photo triac output

Operating temperature range -55 to 110

REACH & RoHS compliance

#D55D & T \$ &

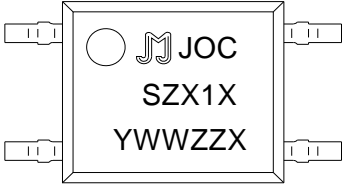


ORDERING INFORMATION

<p><b>J</b></p> <p>JieJie Microelectronics Co., Ltd.</p> <p>Opto Coupler</p>	<p><b>OC</b></p>	<p><b>S</b></p> <p>SCR</p> <p>Zero-crossing</p>	<p><b>Z</b></p>	<p><b>2</b></p>	<p><b>1</b></p>	<p><b>A</b></p> <p>A: I<sub>FT</sub> 10mA B: I<sub>FT</sub> 5mA C: I<sub>FT</sub> 3mA</p> <p>I<sub>T(RMS)</sub>: 100mA</p> <p>2: V<sub>OFF</sub> 600V 3: V<sub>OFF</sub> 800V</p>	<p><b>-M4</b></p> <p>SOP4</p>	<p><b>/</b></p> <p>None: T1 R: T2</p>
--	------------------	---	-----------------	-----------------	-----------------	---	-------------------------------	---

Packing Quantity	
Option	Quantity
V k	y k

MARKING

	<p><b>YWWZZX</b></p> <p>————— LOT NO.</p>
---	---

Characteristics Curves

FIG.1: Max. Allowable LED Forward Current vs. Ambient Temperature

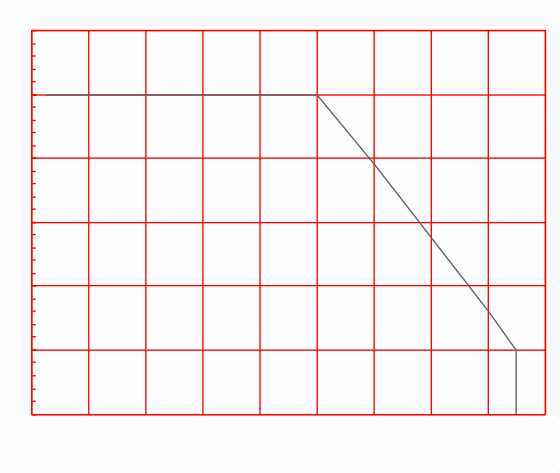


FIG.2: On-state Terminal Current vs. Ambient Temperature

P

**FIG.7:** Normalized On-state Terminal Voltage vs. Ambient Temperature



**FIG.8:** On-state Terminal Voltage vs. On-state Terminal Current

TEST CIRCUITS

FIG.12: Test Circuits of Turn On Time

FIG.13: Waveforms of Turn On Time

Fig.14: Test Circuits of  $dV/dt$

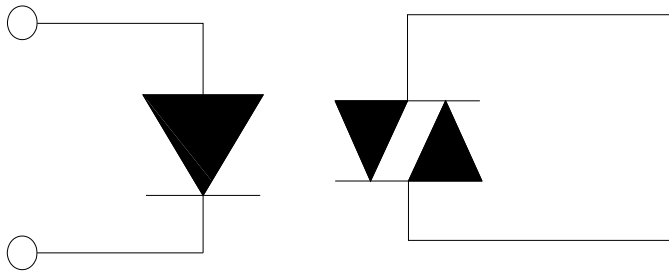
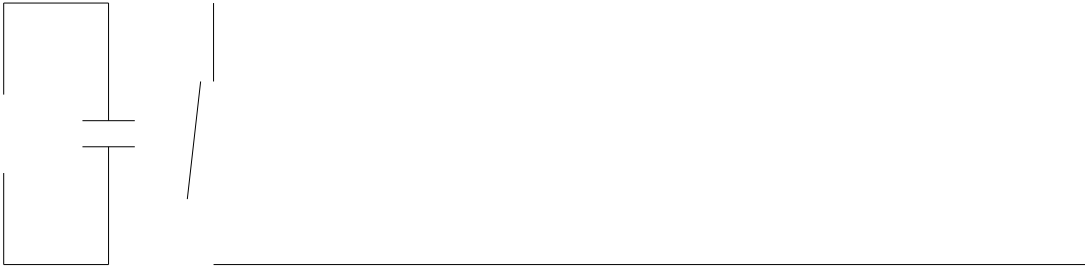
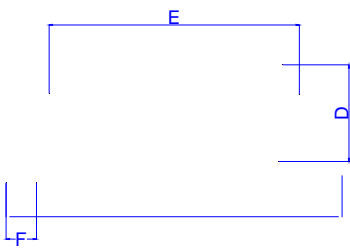
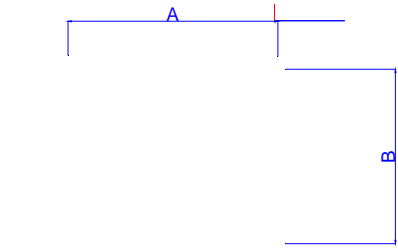


FIG.16: Test circuit for inductive and resistive loads to IEC-61000-4-5 standards

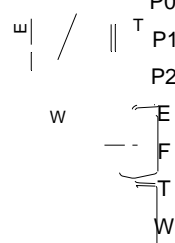
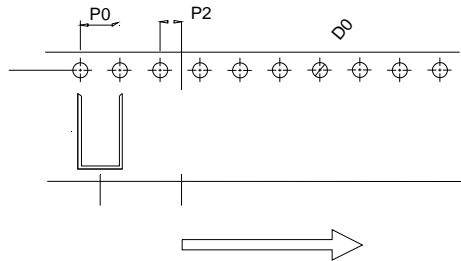


Package Dimension (Unit: mm)



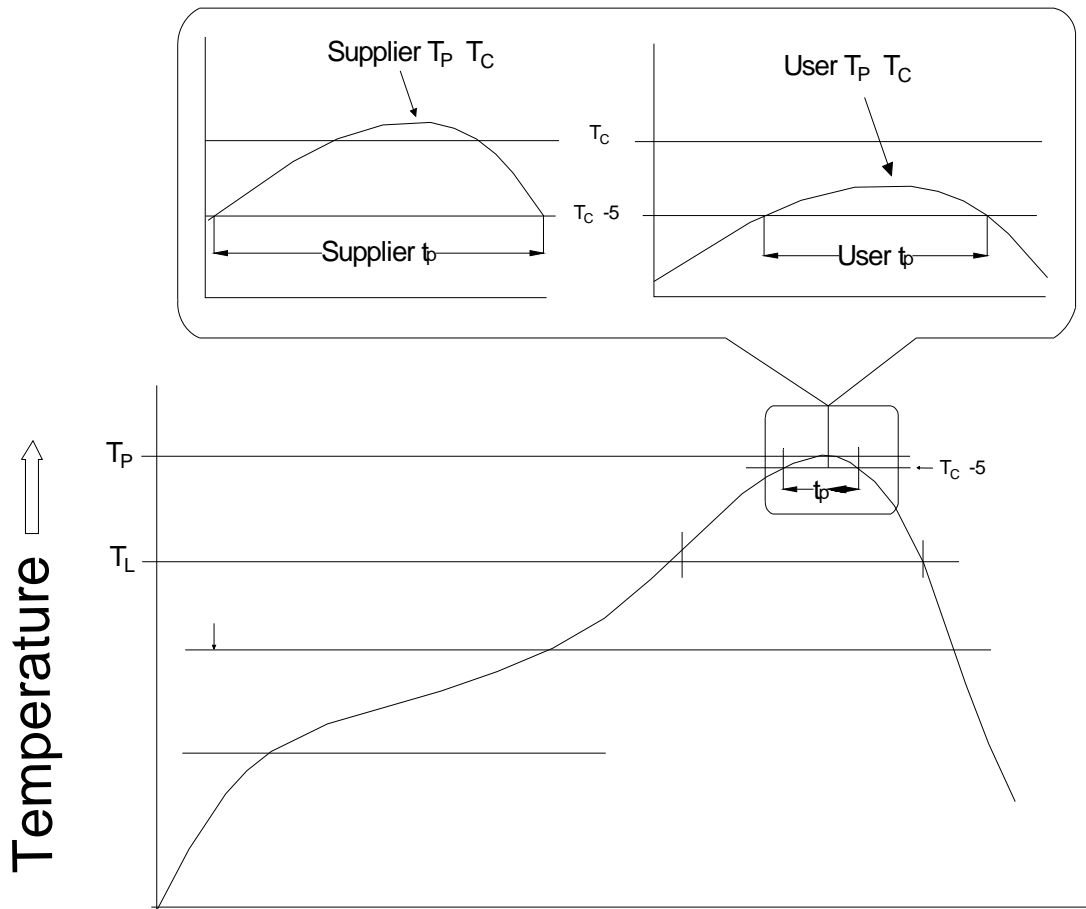
CARRIER TAPE SPECIFICATIONS (Dimensions in mm unless otherwise stated)

Option None



Ref.	Dimensions					
	Millimeters			Inches		
	Min.	Typ.	Max.	Min.	Typ.	Max.
D0						
P0						
P1						
P2						

REFLOW INFORMATION



Note: