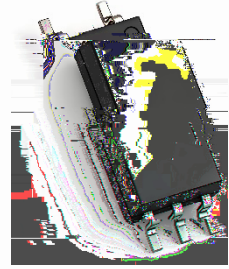




) -o#k@u@V

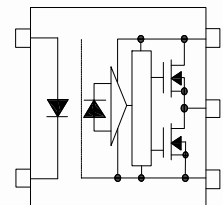
U ° @ 7- ° uyk-o



JOCDA1BB L5



JOCDA1BB L5W



u u

of $\theta_{ch} = \theta_{ch} - \theta_{ch} u \text{ V}$

Parameter	Symbol	Condition	Min.	Typ.	Max.	Unit

--	--	--	--	--	--	--

All Typical values at $T_a=25$

V_{in} : Input signal ($f=25kHz, duty=50%, tr=tf=5ns$ or less). C_L is less than 15 pF which includes probe and stray wiring capacitance.

V_{CMH} : CM_H is the maximum rate of fall of the common mode voltage that can be sustained with the output voltage in the logic high state ($V_O = 2.6V$).

V_{CML} : CML is the maximum rate of rise of the common mode voltage that can be sustained with the output voltage in the logic low state ($V_O = 1V$).

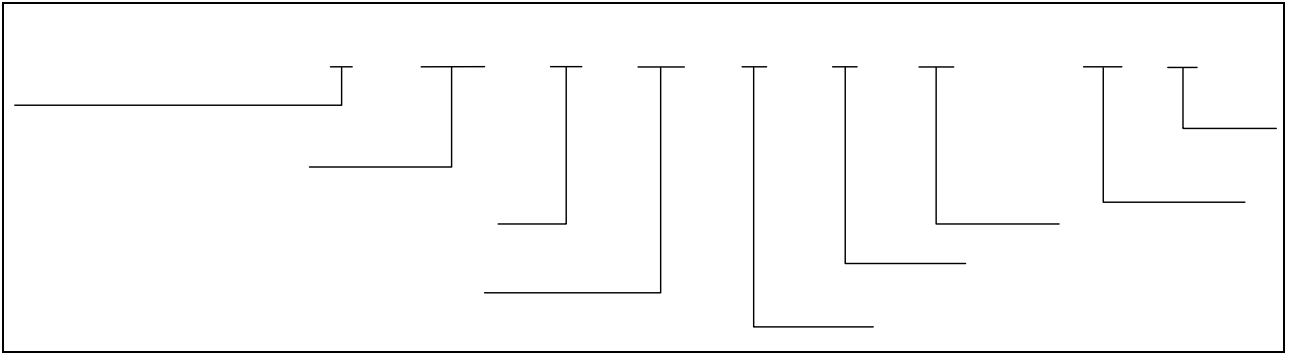
.

.

k \ # .

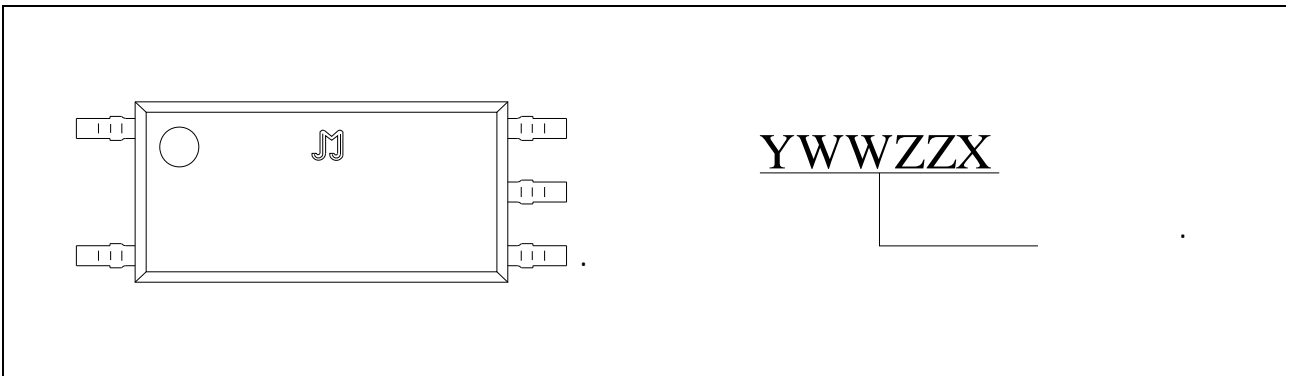
Characteristics	Symbol	Min.	Typ.	Max.	Unit

U° kM/8'



	h	j
\		j
None/R		3000 Units/Reel

U° kM/8'



#

#

FIG.7:

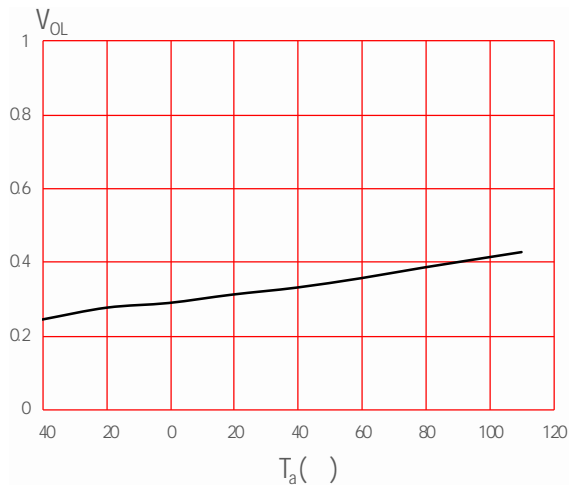
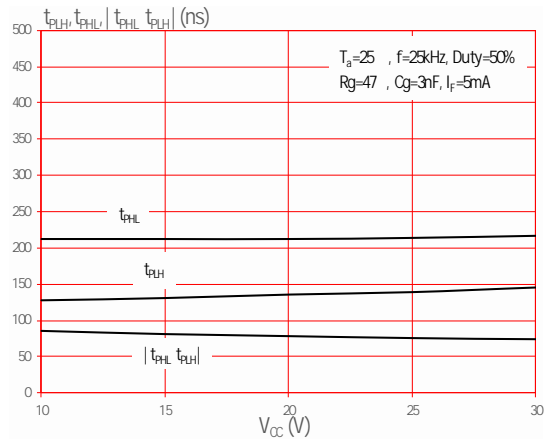


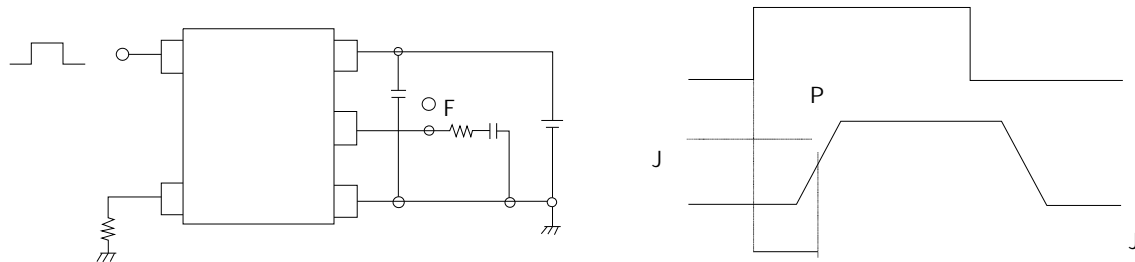
FIG.8:

FIG.13:



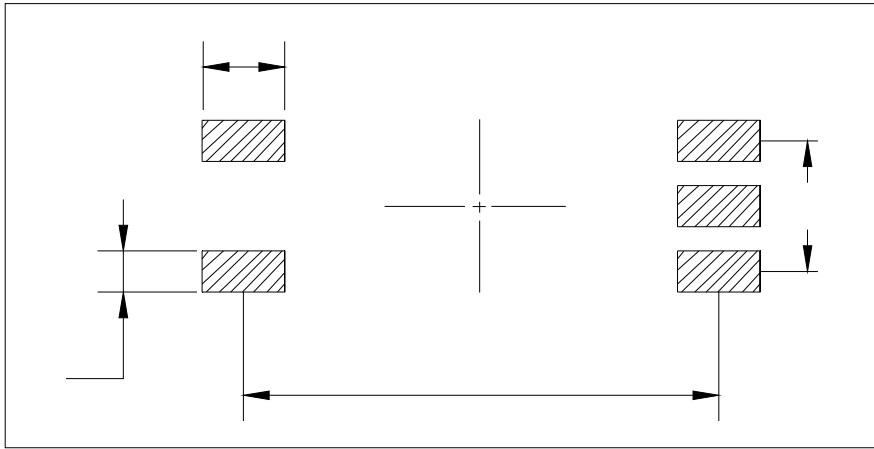
·
·
·
·

U #
FIG.14:

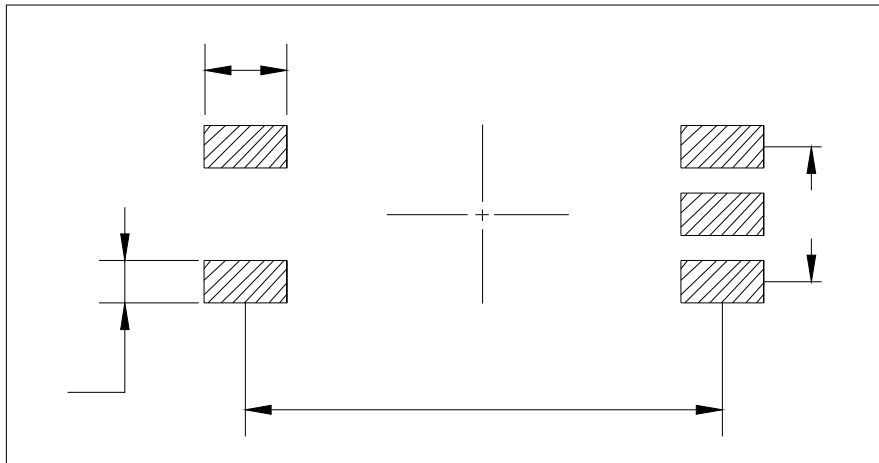


k-# \ U U - V) -) ' o \ Q - k U ° d M)

Q \ h



Q \ h ‡



k-70 † @7 kU ° u@V

